

Treatment and Education

Our MS Meeting Point is located in the Vassall Centre, a fully accessible centre in Bristol. Here people can come as individuals or in groups to find out more about the resources available to people with MS and to attend occasional specialist information events. These events will enable MS professionals and those who have MS to communicate better and help develop improved knowledge and progress in MS treatment.



Contact us at:
MS Research
Treatment & Education,
The Vassall Centre,
Gill Avenue,
Fishponds,
Bristol BS16 2QQ
0117 958 6986
info@ms-research.org.uk
www.ms-research.org.uk

Would you like to help?

Our volunteers are a vital part of our organisation and there are many opportunities to help as volunteers in the office or from home. Whether you can share your skills or personal advice we are always interested in working with enthusiastic people on a one-off or long term basis. For more information email us at info@ms-research.org.uk or call 0117 958 6986.



MS Research DLL 18.8.14 ©MSRTE 2014. Registered Charity No: 1043280. Company No: 3005230. Registered address: MS Research, The Vassall Centre, Gill Avenue, Bristol BS16 2QQ. Fundraising and administration costs are carefully monitored to ensure that they are kept to a minimum. Design: www.samgrovergraphicdesign.co.uk.

Registered Charity No: 1043280

MS
RESEARCH
treatment & education

Multiple Sclerosis Research Treatment & Education

Listening, Learning, Acting:

With your help we could look forward to seeing the back of MS

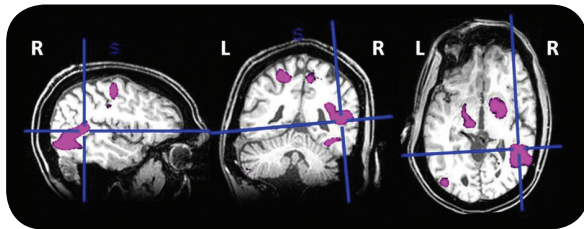
www.ms-research.org.uk
☎ 0117 958 6986

About Multiple Sclerosis

Multiple Sclerosis (MS) is a progressive condition causing nerve damage in the brain and various levels of disability.

Each year thousands of people are diagnosed with MS. Some of those diagnosed will be children below the age of 16. In the UK MS is one of the most common causes of disability affecting young people.

MS Research Treatment & Education (MSRTE) is a charity dedicated to furthering our understanding of MS and developing better treatments through research and education.



Science alone is not enough

Our Aims

At MSRTE we have three main aims:

- **Listen** to people with MS and those who share their lives.
- **Learn** more about the problems they face everyday.
- **Act** to address and alleviate those problems.

Listening

We listen to what those living with MS say about their needs, hopes and concerns. Our own MSRTE Meeting Point provides a forum for researchers and those with MS to come together and talk about specific needs and concerns with dedicated professionals.

Learning

By listening we recognise that for many a cure is the most important longer term goal. More immediately we are aware that people want to see more effort focussed on effective treatment for MS symptoms, especially those for which there is little help at present.

We strive to learn more through the research we fund and from other national and international research. Thanks to real advances in technologies for nerve protection and repair, understanding how nerves are damaged and advances in brain imaging techniques we constantly learn more about MS and its impact.

Acting

As well as funding vital ongoing research we aim to ensure that information about MS is shared and used for the benefit of everyone. We offer opportunities for people to carry out research projects and provide opportunities for experts in the field to talk about new work. Our

MS Meeting Point helps people who have MS to find the resources they need to help them.

